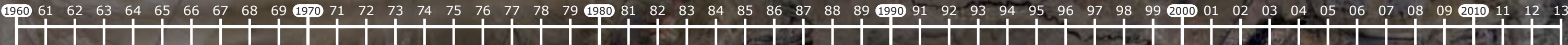
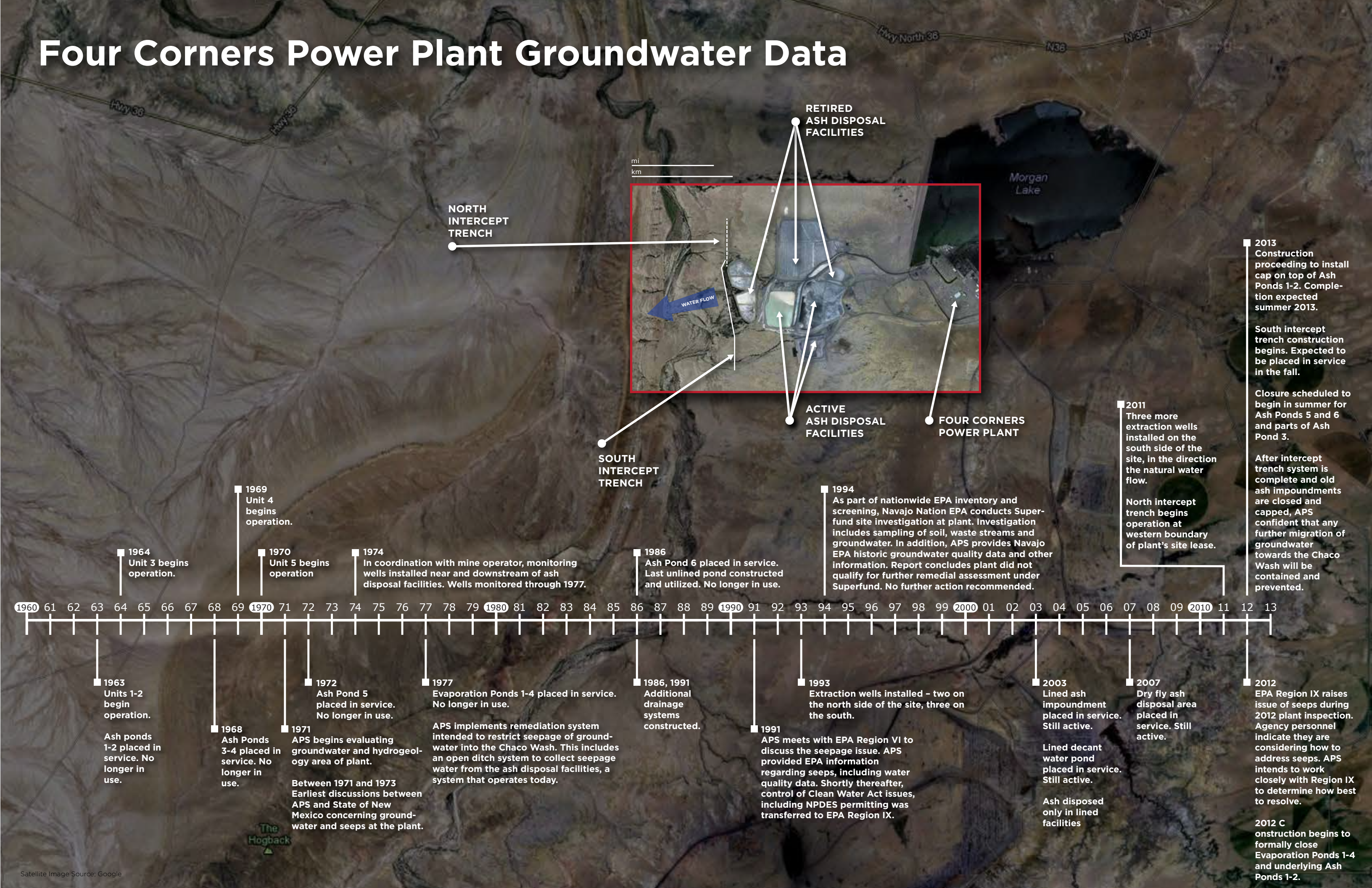


Four Corners Power Plant Groundwater Data



- 1963 Units 1-2 begin operation. Ash ponds 1-2 placed in service. No longer in use.
- 1964 Unit 3 begins operation.
- 1968 Ash Ponds 3-4 placed in service. No longer in use.
- 1969 Unit 4 begins operation.
- 1970 Unit 5 begins operation. Between 1971 and 1973 Earliest discussions between APS and State of New Mexico concerning groundwater and seeps at the plant.
- 1972 Ash Pond 5 placed in service. No longer in use.
- 1974 In coordination with mine operator, monitoring wells installed near and downstream of ash disposal facilities. Wells monitored through 1977.
- 1977 Evaporation Ponds 1-4 placed in service. No longer in use. APS implements remediation system intended to restrict seepage of groundwater into the Chaco Wash. This includes an open ditch system to collect seepage water from the ash disposal facilities, a system that operates today.
- 1986, 1991 Additional drainage systems constructed.
- 1986 Ash Pond 6 placed in service. Last unlined pond constructed and utilized. No longer in use.
- 1991 APS meets with EPA Region VI to discuss the seepage issue. APS provided EPA information regarding seeps, including water quality data. Shortly thereafter, control of Clean Water Act issues, including NPDES permitting was transferred to EPA Region IX.
- 1993 Extraction wells installed - two on the north side of the site, three on the south.
- 1994 As part of nationwide EPA inventory and screening, Navajo Nation EPA conducts Superfund site investigation at plant. Investigation includes sampling of soil, waste streams and groundwater. In addition, APS provides Navajo EPA historic groundwater quality data and other information. Report concludes plant did not qualify for further remedial assessment under Superfund. No further action recommended.
- 2003 Lined ash impoundment placed in service. Still active. Lined decant water pond placed in service. Still active. Ash disposed only in lined facilities
- 2007 Dry fly ash disposal area placed in service. Still active.
- 2012 EPA Region IX raises issue of seeps during 2012 plant inspection. Agency personnel indicate they are considering how to address seeps. APS intends to work closely with Region IX to determine how best to resolve. 2012 C onstruction begins to formally close Evaporation Ponds 1-4 and underlying Ash Ponds 1-2.
- 2013 Construction proceeding to install cap on top of Ash Ponds 1-2. Completion expected summer 2013. South intercept trench construction begins. Expected to be placed in service in the fall. Closure scheduled to begin in summer for Ash Ponds 5 and 6 and parts of Ash Pond 3. After intercept trench system is complete and old ash impoundments are closed and capped, APS confident that any further migration of groundwater towards the Chaco Wash will be contained and prevented.